



## RENEGADE WARRANTY

RENEGADE MY2024 MOTORHOMES ARE COVERED BY A 1-YEAR UNLIMITED MILES LIMITED WARRANTY, PLUS A 3-YEAR 36,000-MILE LIMITED STRUCTURAL WARRANTY.

ALL RENEGADE MOTORHOME CHASSIS, ENGINES, TRANSMISSIONS, AND DRIVETRAIN WARRANTIES ARE PROVIDED AND ADMINISTERED BY THEIR RESPECTIVE MANUFACTURERS.

FOR SPECIFIC INFORMATION ABOUT THESE WARRANTIES, ASK YOUR DEALER OR CONTACT RENEGADE RV.



# VIENNA 2024



**Renegade**  
RV

52216 SR15 BRISTOL, IN 46507  
574.848.1126 | RENEGADERV.COM

**Renegade**  
RV



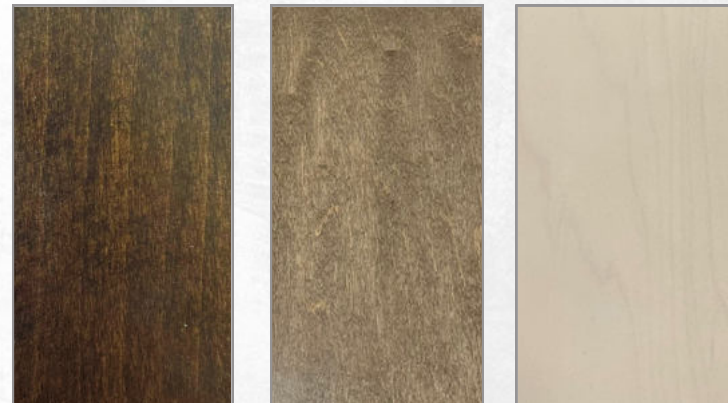
# VIENNA

THE VIENNA IS A LUXURIOUS AND VERSATILE MOTORHOME DESIGNED WITH THE UTMOST IN REFINED CRAFTSMANSHIP AND ATTENTION TO DETAIL. THE SLEEK INTERIOR IS BOTH FUNCTIONAL AND SPACIOUS. WITH SOLID HARDWOOD THROUGHOUT, MULTIPLE SLEEPING ARRANGEMENTS, AND AMPLE STORAGE, YOU'LL BE READY TO TRAVEL WITH COMFORT AND STYLE IN THE VIENNA.

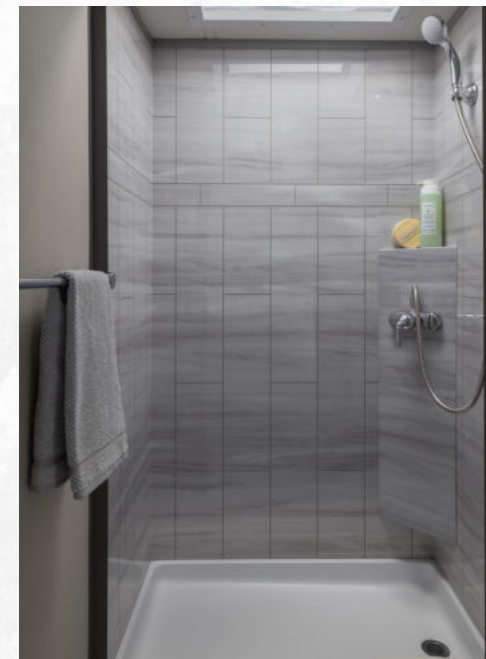


## INTERIOR DECORS

### CABINETS



**BURNISHED LAKEWOOD CASHMERE  
SABLE**



**TUSCANY**

**CYPRUS**



**ATHENS**



Featured here is the Vienna 25TBN in our Cyprus decor with beautiful high gloss Burnished Sable cabinetry.





## AT A GLANCE

EXTERIOR HEIGHT	11' 0"
EXTERIOR WIDTH	92 1/4"
EXTERIOR LENGTH	25'6"
INTERIOR HEIGHT	80"
INTERIOR WIDTH	89 1/2"

FUEL CAPACITY	24.5 GALLONS
FRESH WATER CAPACITY	34 GALLONS
GREY WATER CAPACITY	29 GALLONS
BLACK WATER CAPACITY	29 GALLONS

## KEY FEATURES

- MERCEDES BENZ® SPRINTER™ 3500 CAB CHASSIS
- MULTIPLEX SYSTEM WITH COLOR TOUCH PANEL AND BLUETOOTH APP CONTROL
- 7 PAINT COLOR OPTIONS
- FOUR-POINT AUTOMATIC HYDRAULIC LEVELING SYSTEM
- GIRARD® GG LATERAL ARM ELECTRIC AWNING WITH LED LIGHTS
- TRUMA® AQUAGO™ COMFORT PLUS TANKLESS WATER HEATER
- SOLID HARDWOOD MAPLE CABINETS AND SOLID SURFACE COUNTERTOPS



VIENNA

## FLOORPLANS



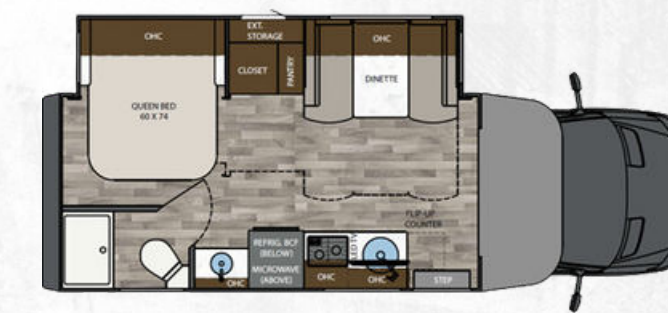
25RMC | 25' MURPHY BED W/ CABOVER BUNK



25RML | 25' MURPHY BED W/ CABOVER STORAGE



25FWC | 25' FULL WALL SLIDE W/ CABOVER BUNK



25FWS | 25' FULL WALL SLIDE W/ CABOVER STORAGE



25TBC | 25' TWIN BEDS W/ CABOVER BUNK



25TBN | 25' TWIN BEDS W/ CABOVER STORAGE



# PAINT OPTIONS



TUNDRA



POLARIS



ARCTIC RIDGE



MOJAVE SUNSET



SUMMER SAND



LAVA FIELD



BLUE SKIES



# STANDARDS AND OPTIONS

## CAB/CHASSIS

- MERCEDES BENZ® SPRINTER™ 3500 CAB CHASSIS
- HIGH-OUTPUT TURBO DIESEL ENGINE
- 280A ALTERNATOR
- 4,200 LB. TOWING CAPACITY
- ALUMINUM WHEELS
- INSTRUMENT CLUSTER WITH COLOR DISPLAY
- MBUX™ MULTIMEDIA SYSTEM WITH 10.25" TOUCHSCREEN WITH RADIO, SATELLITE, NAVIGATION, APPLE® CARPLAY™ AND ANDROID® AUTO™ COMPATIBLE
- WIRELESS CHARGING CAPABILITIES
- ACOUSTIC PACKAGE
- REAR AND SIDE VIEW CAMERAS
- HEATED EXTERIOR MIRRORS
- ACTIVE LANE KEEPING ASSIST
- DISTRONIC ACTIVE DISTANCE ASSIST
- ATTENTION, BRAKE, AND TRAFFIC SIGN ASSIST
- RAIN SENSOR WITH WET WIPER SYSTEM
- LEATHER, MULTIFUNCTION STEERING WHEEL
- SWIVEL, POWER AND HEATED SEATS
- REMOVABLE CAB MAT AND PRIVACY SHADE
- CAB COURTESY LIGHTS
- CAB STEPS

## EXTERIOR

- AERODYNAMIC FIBERGLASS FRONT WITH FULL TRANSITIONS, REAR BROW AND BUMPER
- FOUR-POINT HYDRAULIC LEVELING SYSTEM WITH APP
- LIGHTED EXTERIOR ENTRY DOOR ASSIST HANDLE
- KEYLESS ENTRY
- POWERED FOLDING DOUBLE ENTRY STEPS
- (7) COLORWAY PAINT OPTIONS
- GIRARD® GG LATERAL ARM ELECTRIC AWNING WITH LED LIGHTS
- SLIDE TOPPERS
- FRAMELESS TINTED WINDOWS WITH SCREENS
- SIDE-SWING INSULATED ALUMINUM COMPARTMENT DOORS
- COMPOSITE STORAGE COMPARTMENTS

## CONSTRUCTION

- LIGHTWEIGHT VACUUM BOND LAMINATED SIDEWALLS WITH WELDED ALUMINUM FRAMING
- LIGHTWEIGHT VACUUM BOND LAMINATED FLOOR WITH ALUMINUM FRAMING AND HIGH STRENGTH COMPOSITE INTERIOR/EXTERIOR PANELS
- WELDED ALUMINUM ROOF TRUSS SYSTEM WITH FRAMED CUTOUTS
- ONE-PIECE CROWNED FIBERGLASS ROOF SURFACE

## INTERIOR

- (3) INTERIOR DECOR OPTIONS
- DÉCOR COORDINATING WOOD VALANCES WITH FABRIC ACCENTS
- SINGLE ROLLER NIGHT SHADES (MANUAL)
- SOFT TOUCH PADDED WALLS AND CEILING
- PREMIUM VINYL FLOORING THROUGHOUT
- MAPLE HARDWOOD CABINETRY
- 3-WOOD STAIN COLOR OPTIONS, 2-FINISH OPTIONS
- DOVETAIL DRAWERS ON SOFT CLOSING SLIDES
- INLAY BASE DOORS AND FULL OVERLAY CURVED OVERHEAD DOORS ON HIDDEN HINGES
- HARDWOOD SLIDE OUT PANTRY
- HARDWOOD SLIDE FASCIA
- CHROME DOOR HARDWARE
- CHROME KITCHEN FAUCET
- SOLID SURFACE COUNTERTOPS THROUGHOUT
- ROUND STAINLESS-STEEL SINGLE BOWL UNDERMOUNT KITCHEN SINK WITH COVER
- ACCENT LIGHTING AT KITCHEN COUNTERTOP
- SOLID SURFACE BACKSPLASH
- FLIP-UP COUNTERTOP EXTENSION
- LED LIGHTING
- MEMORY FOAM MATTRESS
- ULTRA SOFT TOUCH VINYL FURNITURE UPHOLSTERY
- CONVERTIBLE BOOTH DINETTE WITH STORAGE
- JIFFY SOFA SLEEPER WITH STORAGE (RM ONLY)
- AEROCAP WITH STORAGE CABINET OR CABOVER BUNK

## APPLIANCES

- 8 CU. FT., 12V STAINLESS STEEL COMPRESSOR REFRIGERATOR
- 2-BURNER GAS FLUSH MOUNT COOKTOP WITH FLIP-UP COVER
- 1.0 CU. FT. STAINLESS STEEL CONVECTION MICROWAVE OVEN
- TRUMA® AQUAGO COMFORT PLUS TANKLESS WATER HEATER
- 13,500 BTU ROOF A/C WITH HEAT PUMP
- DUCTED AIR CONDITIONING
- 18,000 BTU LP DUCTED GAS FURNACE
- MAXXAIR® POWER VENTS
- CARBON MONOXIDE, LP AND SMOKE DETECTORS, AND FIRE EXTINGUISHER

## ENTERTAINMENT SYSTEM

- 32" SMART LED TV IN LIVING AREA
- SOUNDBAR HOME THEATER WITH BLUETOOTH STREAMING
- 24" SMART LED TV BEDROOM (N/A ON RM)
- EXTERIOR ENTERTAINMENT CENTER
  - 28" SMART LED TV
  - SOUNDBAR WITH BLUETOOTH STREAMING
  - USB CHARGING
- WINEGARD® CONNECT 2.0 ROOFTOP OTA ANTENNA WITH WIFI AND 4G READY (SIM CARD REQ.)

## BATH

- MAPLE HARDWOOD VANITY AND MEDICINE STORAGE CABINETS
- LED VANITY LIGHT
- DELUXE CHROME NICKEL BATH FAUCET AND ADJUSTABLE SHOWER HEAD
- CHROME TOWEL BAR, TOWEL RING, AND TP HOLDER
- PORCELAIN MACERATOR TOILET WITH FOOT PEDAL FLUSH (N/A ON RM)
- SOLID SURFACE COUNTERTOP WITH INTEGRATED SINK
- SHOWER WITH GLASS DOOR (N/A ON TB)
- SHOWER WITH SCROLL STYLE DOOR (TB ONLY)
- SKYLIGHT OVER SHOWER

## ELECTRICAL SYSTEMS

- 3.6KW ONAN® LP GENERATOR
- AUTOMATIC GENERATOR START SYSTEM
- 30-AMP ELECTRICAL PANEL
- 2,000W TRUE SINE WAVE INVERTER
- TRANSFER SWITCH WITH SURGE PROTECTION
- (2) 100AH AGM HOUSE BATTERIES
- 330W SOLAR PANEL
- MULTIPLEX CONTROL SYSTEM WITH BLUETOOTH APP CONTROL
- USB/USB-C CHARGING IN LIVING AREA, BEDROOM, KITCHEN AND BUNK AREAS
- 30-AMP SHORE CORD PORT
- 12V HOLDING TANK HEATERS, GREY AND BLACK TANKS

## PLUMBING

- 34 GALLON FRESH WATER TANK
- 29 GALLON GREY TANK
- 29 GALLON BLACK TANK
- LP TANK WITH REMOTE FILL
- SEE-LEVEL® TANK MONITORING SYSTEM
- FULL MAINTENANCE WET BAY
  - BLACK TANK FLUSH SYSTEM
  - FRESH WATER FILL –CITY WATER HOOKUP
  - EXTERIOR SHOWER WITH COIL HOSE
- ON DEMAND WATER PUMP
- WHOLE HOUSE WATER FILTRATION SYSTEM
- LP QUICK DISCONNECT

## POPULAR OPTIONS

- 90 SHEEN HIGH GLOSS CABINET FINISH
- THEATER SEATING WITH TABLE ILO DINETTE
- CAB TABLE
- SINGLE BURNER INDUCTION COOKTOP ILO GAS COOKTOP
- LITHIUM BATTERIES ILO AGM BATTERIES
- ENHANCED LITHIUM UPGRADE WITH GEN DELETE
  - ENLARGED BATTERY POWER BANK (800AH)
  - UPGRADED INVERTER (3000W)
  - ADDITIONAL AUXILIARY ALTERNATOR
  - ADDED STORAGE COMPARTMENT ILO GENERATOR
- ADDITIONAL 400AH ENHANCED LITHIUM BATTERY
  - EXPANDS GEN DELETE BATTERY BANK TO 1200AH
- BLACK WHEELS AND BAGGAGE DOOR HANDLES ILO CHROME
- DIAMOND SHIELD FRONTAL PAINT PROTECTION



\*ALL FEATURES ARE SUBJECT TO CHANGE WITHOUT NOTICE OR OBLIGATION